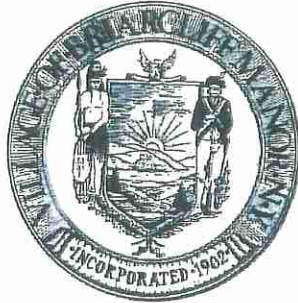


VILLAGE OF
BRIARCLIFF MANOR
www.briarcliffmanor.org



1111 PLEASANTVILLE ROAD
BRIARCLIFF MANOR, N.Y. 10510
TELEPHONE: (914) 944-2782
FAX: (914) 941-4837

December 11, 2007

Dear Scarborough Station Parking Permit Holder:

Metro North Railroad will be reconstructing the Scarborough Station commencing on January 15, 2008. The project includes the replacement of both platforms, as well as the staircases and the bridge across the railroad tracks. The reconstruction will include elevators. It is anticipated that the reconstruction of the station will take 2 1/2 years to complete.

A diagram is included on the back of this letter and you can reference all of the items discussed in this letter on that diagram.

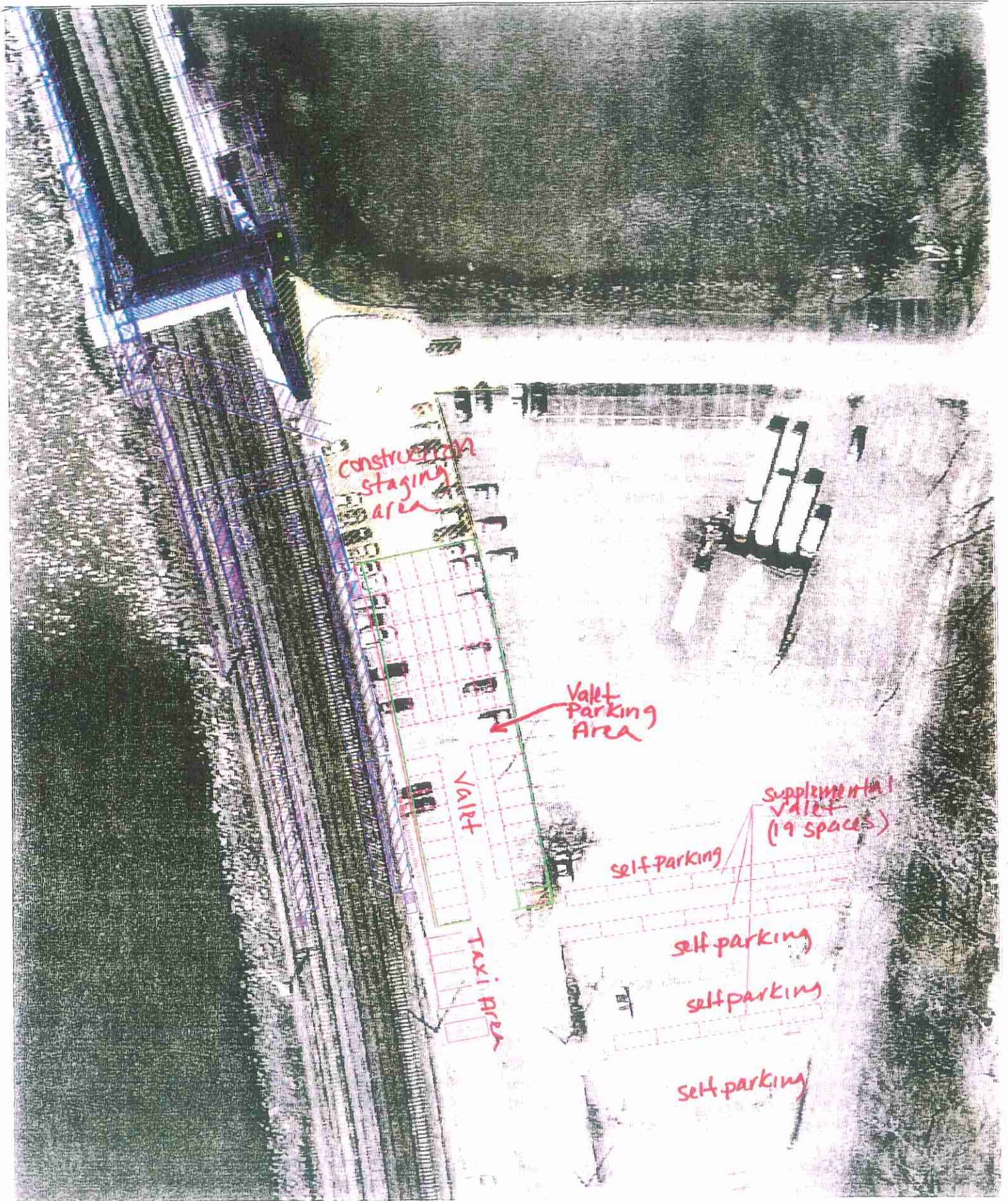
Due to the construction project, 20 parking spaces will be eliminated. The 20 parking spaces are the spaces located closest to the existing entrance to the station, by the staircase and taxi/shuttle/kiss and ride drop off area. This area will be the construction staging area for the contractor during the entire construction project. In addition, the roadway to the staircase (next to Kemeys Cove) will be closed. The main entrance to the station will be moved to the south.

The Village will be addressing the loss of parking spaces by establishing valet parking at the station. The valet service will commence operation at the station on January 7, 2008. This will provide a one week "tweaking" period between the major construction at the station and the commencement of valet parking. The valet parking service will operate from 7:15 a.m. to 8:00 p.m., Monday through Friday, with the exception of holidays. There is no additional cost to parking permit holders to utilize the valet service. Please note, that the provision of valet parking by the Village has no bearing upon parking provided at the bus depot (Briarcliff Bus). In conjunction with the valet parking service, eight additional self-parking spaces will be created at the station. The overall impact on parking at the station, with the valet service and additional self-parking spaces is an additional 21 parking spaces at the Scarborough Station, as compared to the number currently provided by the Village.

The company selected to provide valet parking service at the station is Pro-Park America. This company has been in the valet parking business for 23 years and has experience operating commuter parking locations in Scarsdale, Stamford and other locations in Connecticut. Pro-Park American will be working with the Village on signage to provide clear direction to permit holders. Valet parking is available for the use of permit holders only.

Permit holders who arrive at the station prior to 7:15 a.m. must park their vehicles in the area available for self-parking. Self-parking is not permitted in the area specifically designated for valet parking (parallel to railroad tracks). Anyone self-parking in this area will be issued a parking ticket. At 7:15 a.m., the valet parking service will open and permit holders can either self-park or go to the valet service. The valet parking service will park vehicles in the areas strictly designated for valet parking, and once those parking areas are full, will valet park in the areas marked Supplemental Valet Spaces on the diagram on the back side of this letter. Provision will be made by the valet parking service for those permit holders who valet park their vehicle and return from New York City after 8:00 p.m. In addition, permit holders will be able to call or email the valet service to let them know when the permit holder intends to return from the City, so that your vehicle will be available (cued) when you return from work. Please note that there is no guarantee of a parking space at the station.

The Village will be evaluating the valet parking concept during the 30 month construction period to determine the viability for continuation after construction to provide additional parking at Scarborough Station.



Briarcliff Manor, New York

Scarborough Station Valet Service

© Scarborough Station Valet Service